

3. Results of BioCreative

3.1. Task 1

3.1.1 Task 1A

User	Run	Open/ closed	tp	fp	fn	precision	recall	balanced-f	submission
1	1	closed	4768	1159	1181	0.804	0.801	0.803	user1_1A_1_closed
	2	open	4841	1185	1108	0.803	0.814	0.809	user1_1A_2_open
	3RL	closed	4791	1177	1158	0.803	0.805	0.804	user1_1A_3RL_closed
	4	open	4868	1211	1081	0.801	0.818	0.809	user1_1A_4_open
2	1	open	4075	1016	1874	0.800	0.685	0.738	user2_1A_1_open
	2	open	4145	2360	1804	0.637	0.697	0.666	user2_1A_2_open
	3	open	4194	2440	1755	0.632	0.705	0.667	user2_1A_3_open
3	1	open	4053	3212	1896	0.558	0.681	0.613	user3_1A_1_open
5	1f	closed	5080	1338	869	0.792	0.854	0.822	user5_1A_1f_closed
	2f	open	4969	1033	980	0.828	0.835	0.832	user5_1A_2f_open
	3	open	4790	971	1159	0.831	0.805	0.818	user5_1A_3_open
	4	open	4844	915	1105	0.841	0.814	0.827	user5_1A_4_open
6	1	closed	4096	694	1853	0.855	0.689	0.763	user6_1A_1_closed
	2	closed	4269	798	1680	0.843	0.718	0.775	user6_1A_2_closed
8	1	closed	4528	999	1421	0.819	0.761	0.789	user8_1A_1_closed
	1	open	4662	855	1287	0.845	0.784	0.813	user8_1A_1_open
	2	closed	4601	944	1348	0.830	0.773	0.801	user8_1A_2_closed
	2	open	4683	737	1266	0.864	0.787	0.824	user8_1A_2_open
10	1	closed	4276	4256	1673	0.501	0.719	0.591	user10_1A_1_closed
	2	closed	4208	3752	1741	0.529	0.707	0.605	user10_1A_2_closed
	3	closed	3519	2573	2430	0.578	0.592	0.585	user10_1A_3_closed
11	1	closed	4788	1199	1161	0.800	0.805	0.802	user11_1A_1_closed
	2	closed	4807	1167	1142	0.805	0.808	0.806	user11_1A_2_closed
	3	closed	4948	1086	1001	0.820	0.832	0.826	user11_1A_3_closed
	4	open	4834	1603	1115	0.751	0.813	0.781	user11_1A_4_open
12	1	closed	4278	1853	1671	0.698	0.719	0.708	user12_1A_1_closed
	2	closed	4200	1644	1749	0.719	0.706	0.712	user12_1A_2_closed
	3	closed	3673	1138	2276	0.763	0.617	0.683	user12_1A_3_closed
	4	open	4324	1664	1625	0.722	0.727	0.724	user12_1A_4_open
13	1	open	4412	939	1537	0.825	0.742	0.781	user13_1A_1_open
	2	open	4422	951	1527	0.823	0.743	0.781	user13_1A_2_open
	3	open	4407	951	1542	0.823	0.741	0.780	user13_1A_3_open
18	1	open	2486	684	3463	0.784	0.418	0.545	user18_1A_1_open
21	1RL	closed	1973	11079	3976	0.151	0.332	0.208	user21_1A_1RL_closed
	1	closed	2117	17746	3832	0.107	0.356	0.164	user21_1A_1_closed
	2RL	open	2568	4116	3381	0.384	0.432	0.407	user21_1A_2RL_open
	2	open	2716	13337	3233	0.169	0.457	0.247	user21_1A_2_open

User	Run	Open/ closed	tp	fp	fn	precision	recall	balanced-f	submission
25	1	closed	3379	7071	2570	0.323	0.568	0.412	user25_1A_1_closed
	2	closed	3372	7347	2577	0.315	0.567	0.405	user25_1A_2_closed
	3	closed	3444	7647	2505	0.311	0.579	0.404	user25_1A_3_closed
26	baseline	closed	4648	1880	1301	0.712	0.781	0.745	user26_1A_baseline_closed
	heuristic	open	4752	1685	1197	0.738	0.799	0.767	user26_1A_heuristic_open
	tuned	closed	4671	1938	1278	0.707	0.785	0.744	user26_1A_tuned_closed
27	unofficial	open	4066	3263	1883	0.555	0.683	0.612	user27_1A_1unofficial_open

Explanation of the results table:

User: The identifying number assigned to the team

Run: The number of the submission for the team. Some teams will have more than one submission 1, etc. because one submission 1 will be for "open" and the other for "closed". See column 3. 4 of the submissions have a "RL" or "unofficial" label. These submissions were received late and are deemed "unofficial".

Open/Closed: Type of submission. Open - any data source can be used to build a system. Closed - only use the supplied training and development test data to build a system.

tp: Number of true positives returned by the submission.

fp: Number of false positives returned by the submission. $tp + fp =$ Number of positives returned by the submission.

fn: Number of false negatives returned by the submission. $tp + fn =$ Number of "items" in the answer key.

precision = $tp / (tp + fp)$. Fraction of the returned positives that are correct.

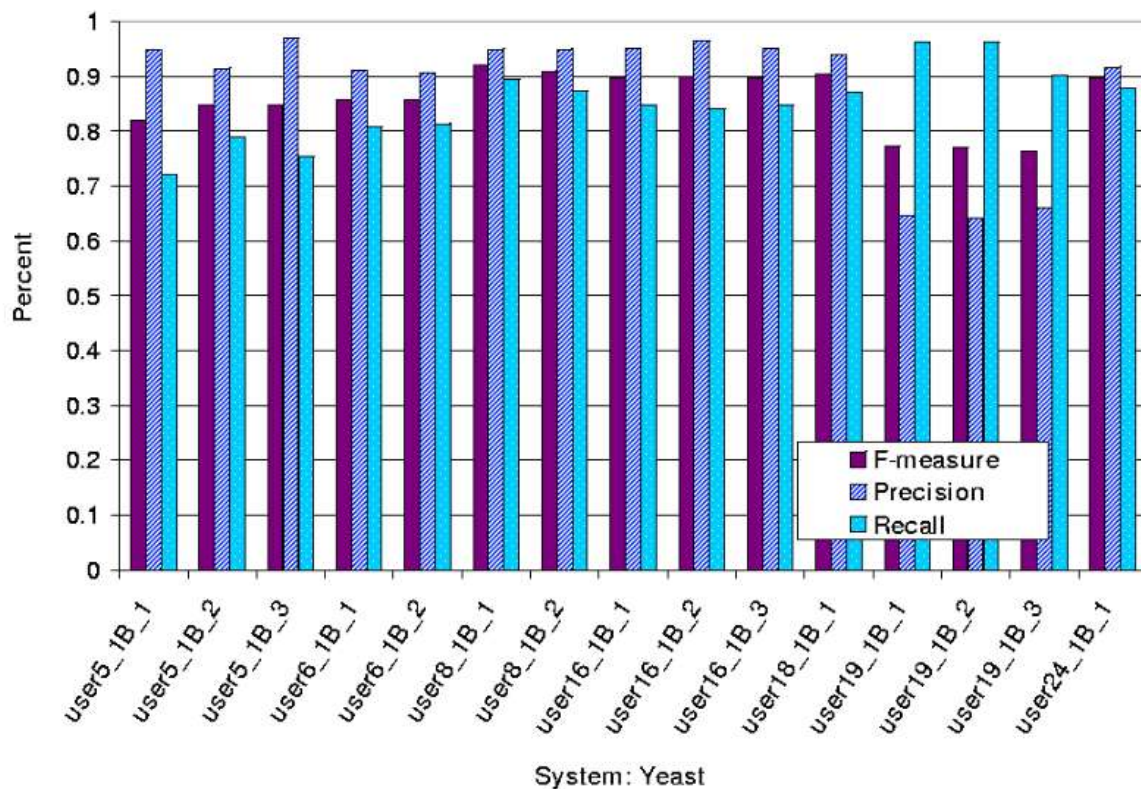
recall = $tp / (tp + fn)$. Fraction of the answers in the key that were returned by the submission.

balanced-f = $2 * precision * recall / (precision + recall)$. The balanced-f (score) is the harmonic mean of recall and precision.

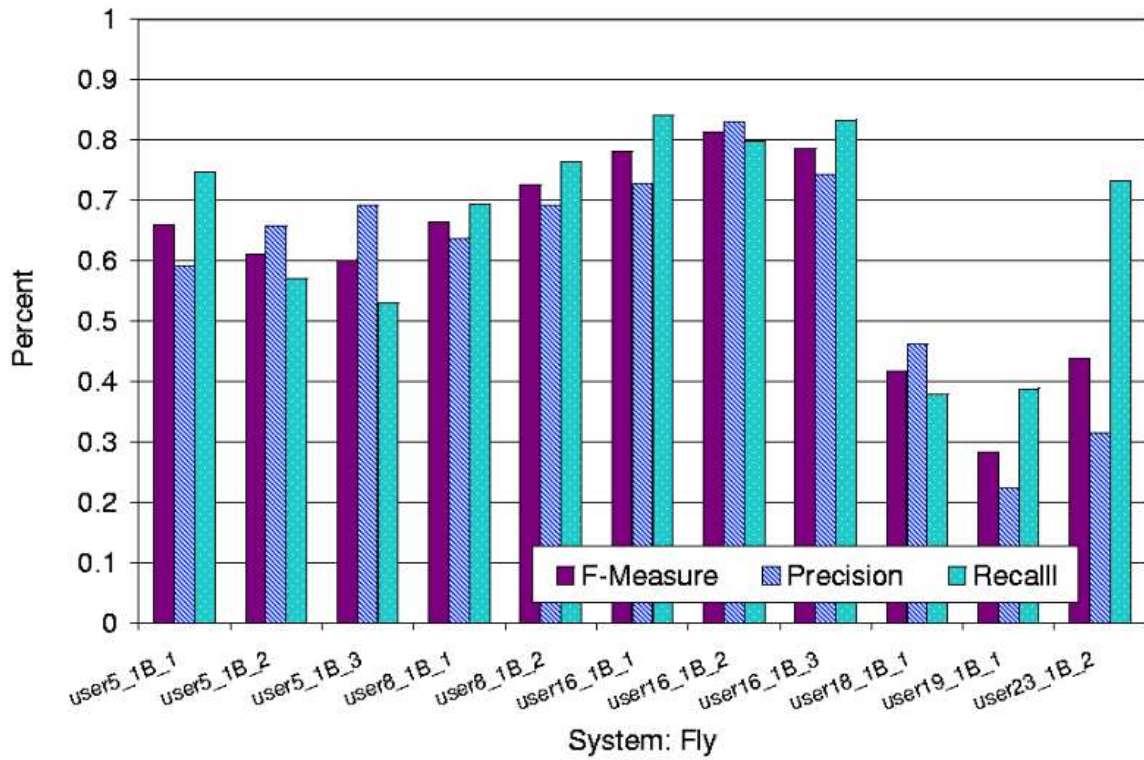
submission: Our name for the submission. A combination of columns 1, 2 and 3.

3.1.2. Task 1B

YEAST	F-measure	Precision	Recall	True Positives	False Positives	Missed
Gold Standard	1	1	1	613	0	0
AutoFound	0.918	0.985	0.86	527	8	86
Hi	0.921	0.969	0.962	590	329	171
Low	0.763	0.642	0.721	442	15	23
Median	0.858	0.94	0.848	520	34	93
user5_1B_1	0.819	0.948	0.721	442	24	171
user5_1B_2	0.848	0.915	0.79	484	45	129
user5_1B_3	0.848	0.969	0.754	462	15	151
user6_1B_1	0.857	0.912	0.809	496	48	117
user6_1B_2	0.858	0.907	0.814	499	51	114
user8_1B_1	0.921	0.95	0.894	548	29	65
user8_1B_2	0.91	0.95	0.873	535	28	78
user16_1B_1	0.897	0.951	0.848	520	27	93
user16_1B_2	0.899	0.966	0.84	515	18	98
user16_1B_3	0.897	0.951	0.848	520	27	93
user18_1B_1	0.904	0.94	0.871	534	34	79
user19_1B_1	0.773	0.646	0.962	590	324	23
user19_1B_2	0.77	0.642	0.962	590	329	23
user19_1B_3	0.763	0.661	0.902	553	284	60
user24_1B_1	0.897	0.917	0.878	538	49	75



FLY	F-measure	Precision	Recall	True Positives	False Positives	Missed
Gold Standard	1	1	1	429	0	0
AutoFound	0.834	0.863	0.807	346	55	83
Hi	0.815	0.831	0.841	361	684	266
Low	0.284	0.224	0.38	163	70	68
Median	0.661	0.659	0.732	314	146	115
user5_1B_1	0.661	0.592	0.748	321	221	108
user5_1B_2	0.612	0.659	0.571	245	127	184
user5_1B_3	0.602	0.693	0.531	228	101	201
user8_1B_1	0.665	0.638	0.695	298	169	131
user8_1B_2	0.726	0.692	0.765	328	146	101
user16_1B_1	0.781	0.728	0.841	361	135	68
user16_1B_2	0.815	0.831	0.8	343	70	86
user16_1B_3	0.787	0.744	0.834	358	123	71
user18_1B_1	0.417	0.463	0.38	163	189	266
user19_1B_1	0.284	0.224	0.389	167	580	262
user23_1B_2	0.44	0.315	0.732	314	684	115



MOUSE	F-measure	Precision	Recall	True Positives	False Positives	Missed
Gold Standard	1	1	1	540	0	0
Auto Found	0.709	0.99	0.552	298	3	242
Hi	0.791	0.828	0.898	485	674	267
Low	0.571	0.418	0.506	273	69	55
Median	0.738	0.765	0.730	394	131	146
user5_1B_1	0.672	0.767	0.598	323	98	217
user5_1B_2	0.737	0.811	0.676	365	85	175
user5_1B_3	0.619	0.798	0.506	273	69	267
user6_1B_1	0.739	0.813	0.678	366	84	174
user6_1B_2	0.745	0.785	0.709	383	105	157
user8_1B_1	0.744	0.828	0.676	365	76	175
user8_1B_2	0.661	0.635	0.689	372	214	168
user16_1B_1	0.772	0.75	0.794	429	143	111
user16_1B_2	0.777	0.807	0.75	405	97	135
user16_1B_3	0.791	0.765	0.819	442	136	98
user18_1B_1	0.686	0.728	0.648	350	131	190
user19_1B_1	0.58	0.428	0.898	485	648	55
user19_1B_2	0.571	0.418	0.898	485	674	55
user19_1B_3	0.606	0.489	0.798	431	451	109
user24_1B_1	0.767	0.735	0.802	433	156	107
user24_1B_2	0.776	0.764	0.787	425	131	115

